

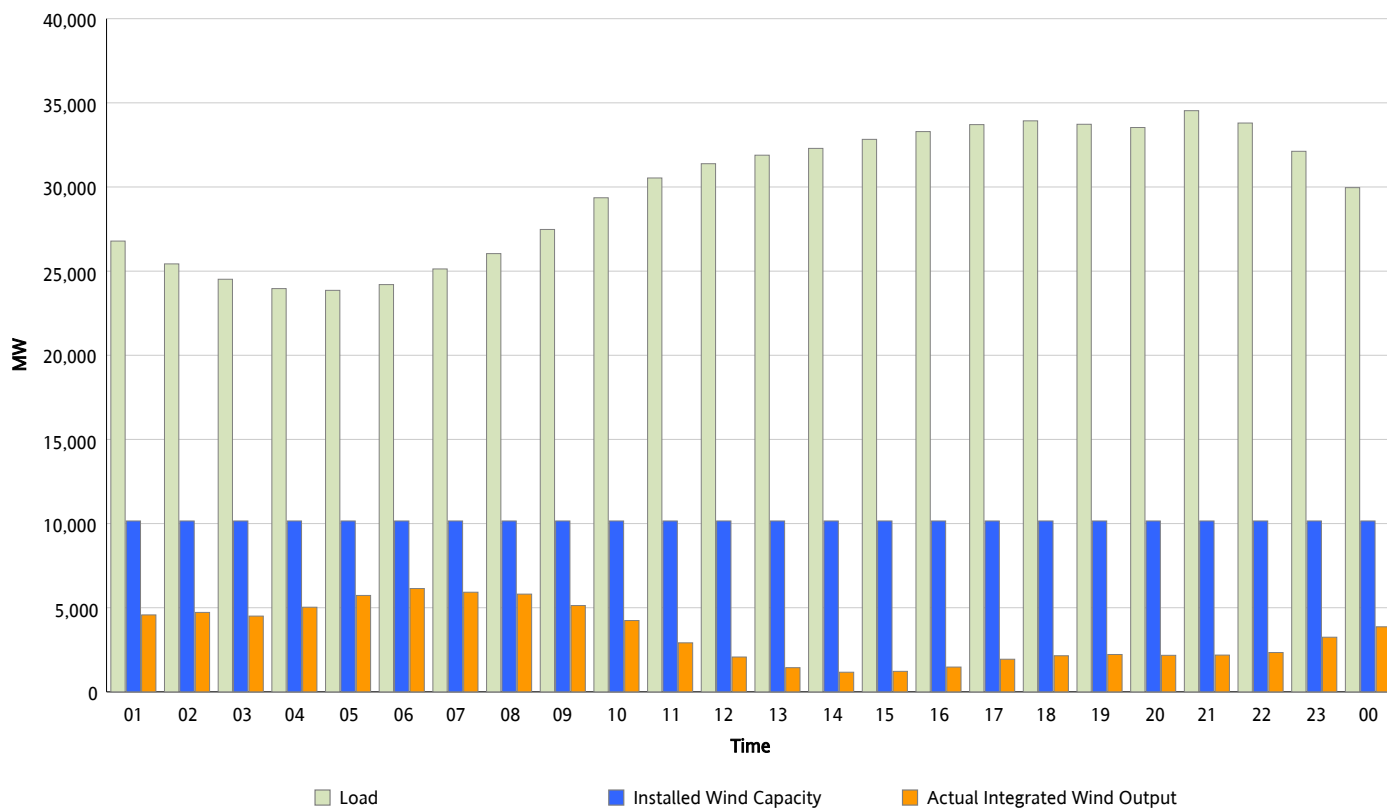


## ERCOT Grid Operations

### Wind Integration Report : 03/30/2013

Peak Load	34,535 MW
Load Peak Hour (HE)	21
Wind Over Peak	2,187 MW
Wind Record 02/09/13	9,481 MW
Max Wind Value*	6,268 MW
Wind Peak Time	05:08
Wind Integration %	26.11 %

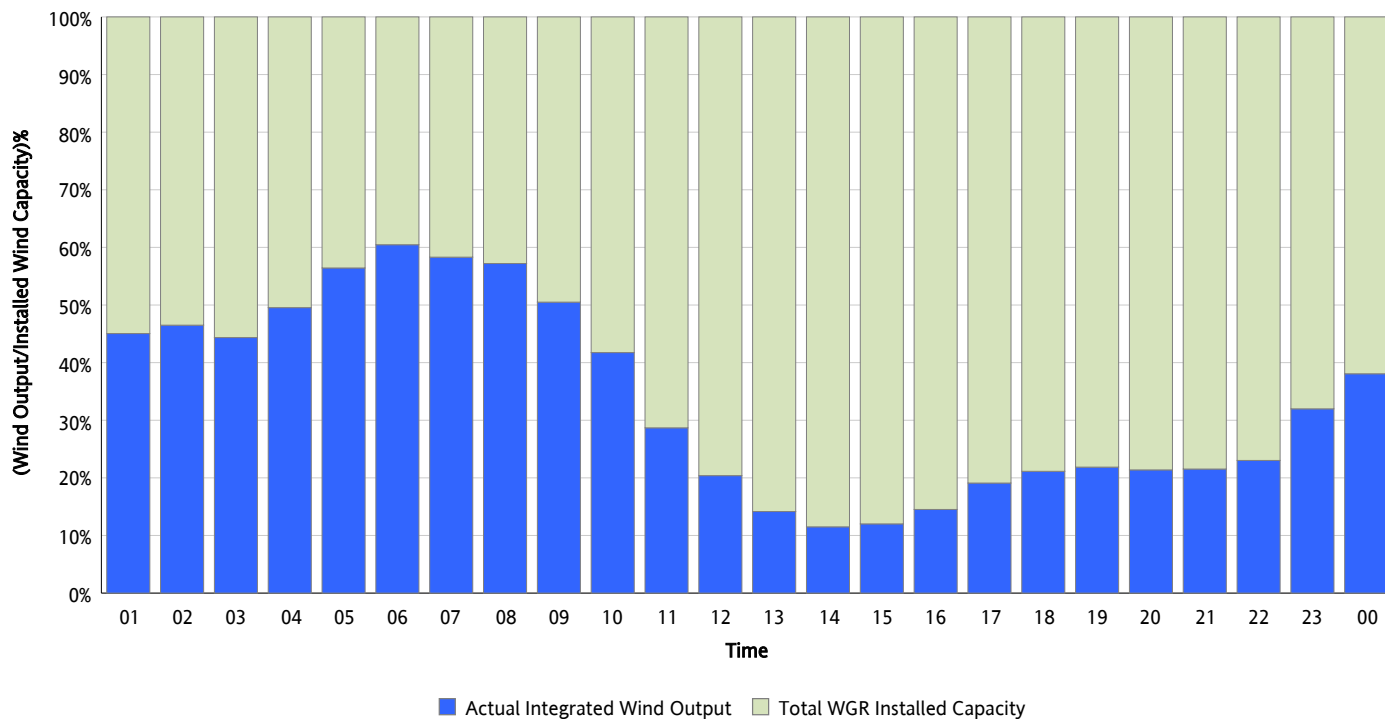
**Hourly Average Actual Load vs. Actual Wind Output**  
**03/30/2013**



*\* Wind Record and Wind Max represent instantaneous values and the rest of the values are integrated over the hour*

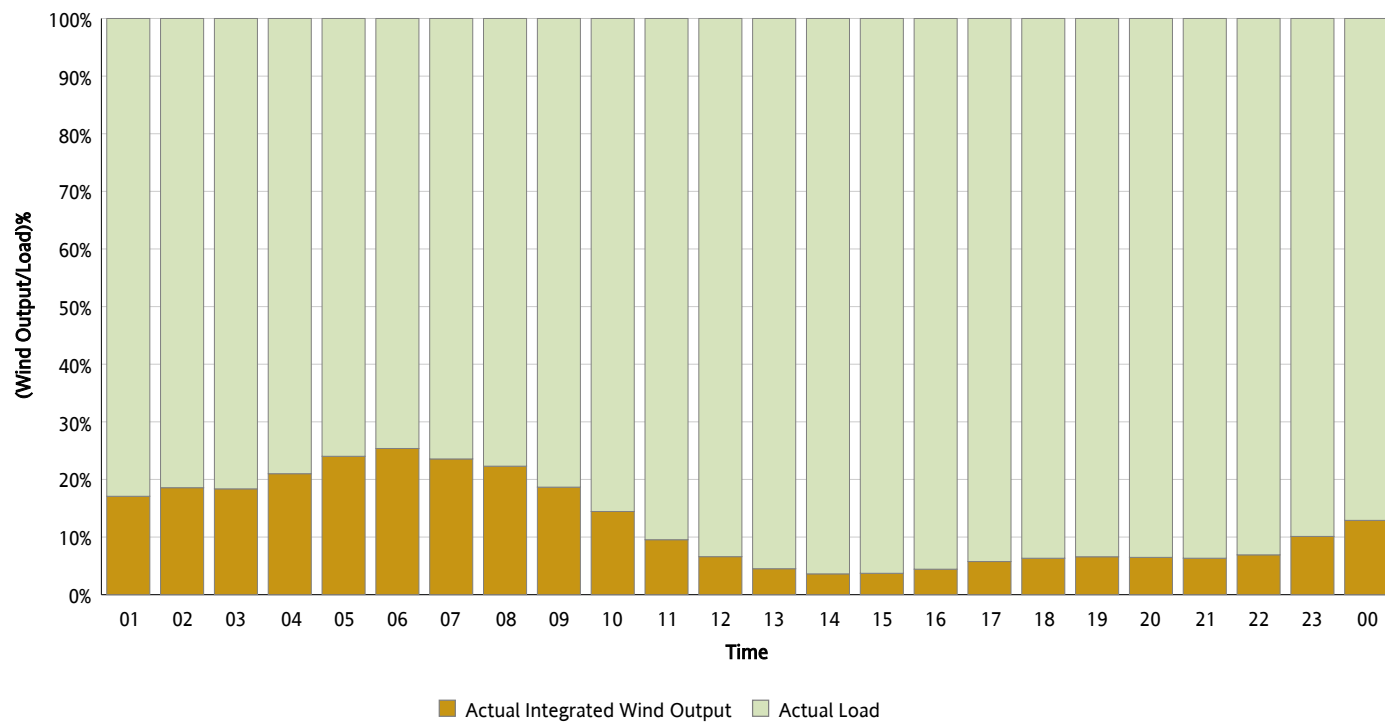
## Actual Wind Output as a Percentage of the Total Installed Wind Capacity

03/30/2013



## Actual Wind Output as a Percentage of the ERCOT Load

03/30/2013



## ERCOT Load vs. Actual Wind Output

03/23/2013 - 03/30/2013

